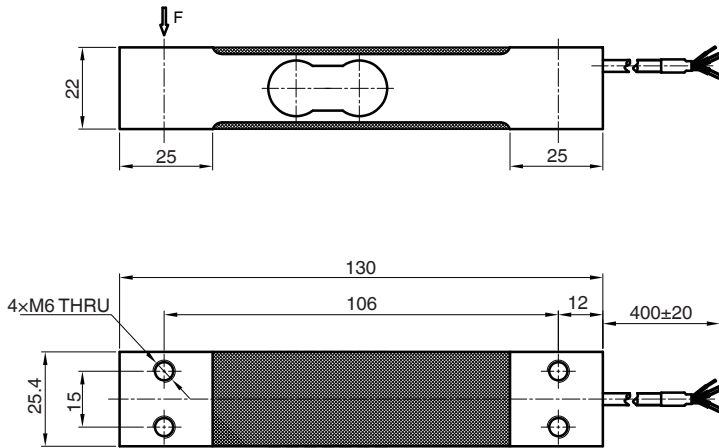


## 尺寸及量程 / Size and Capacity



量程 / Capacity (kg)	材料 / Material	重量 / Weight
3/5/7/10/15/20/30/40	铝合金 / Aluminum alloy	0.25 kg

## 技术参数 / Technical Parameters

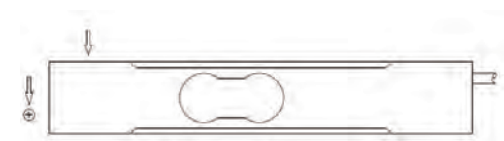
参数	Specifications	技术指标 / Technique
输出灵敏度	Rated output	2.0 ± 0.2 mV/V
零点输出	Zero balance	± 5% F.S.
非线性	Non-linearity	± 0.02% F.S.
滞后	Hysteresis	± 0.02% F.S.
重复性	Repeatability	± 0.02% F.S.
蠕变 (30分钟)	Creep (30min)	± 0.02% F.S.
灵敏度温度漂移	Temp. effect on output	± 0.02% F.S. / 10°C
零点温度漂移	Temp. effect on zero	± 0.014% F.S. / 10°C
输入电阻	Input impedance	410 ± 10 Ω
输出电阻	Output impedance	350 ± 5 Ω
绝缘电阻	Insulation	≥ 5000 MΩ / 100 VDC
使用电压	Recommended excitation	5...10 VDC
最大使用电压	Maximum excitation	15 VDC
温度补偿范围	Compensated temp. range	-10...+40°C
工作温度范围	Operation temp. range	-20...+65°C
安全超载	Safe overload	150% F.S.
极限超载	Ultimate overload	200% F.S.
电缆线尺寸	Cable size	Ø4 × 400 mm
台面尺寸	Platform size	300 × 300 mm
防护等级	Protection class	IP67
连接方式	Cable color code	Input: Red (E+) Black (E-) Output: Green (S+) White (S-) Shield: Yellow-Green 输入: 红 (E+) 黑 (E-) 输出: 绿 (S+) 白 (S-) 屏蔽线: 黄绿



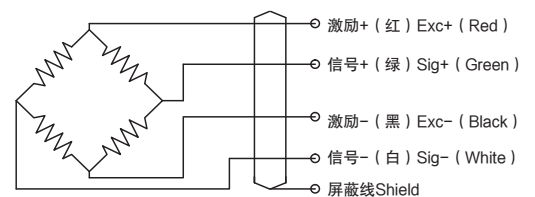
## 特点和用途 / Features & Applications

- 优秀的动态响应性，称重效率高
- 综合精度高，温度变化不敏感
- 偏心负载补偿
- 极具性价比的称重解决方案
- 适用于各种尺寸的检重秤、皮带秤称重应用
- Excellent dynamic responsiveness, to raise weighing efficiency
- High accuracy with low temperature drift
- Off-center load compensation
- Extremely cost effective weighing solution
- Suitable for all sizes of checkweigher and belt weighing applications

## 受力方式 / Load Direction



## 接线图 / Schematic Wiring Diagram



注：屏蔽线接弹性体。  
Shield is connected to spring body.